

# Leica RTC360 Equipment List



- when it has to be **right**

**Leica**  
Geosystems

# Table of Contents

---

<b>Leica RTC360</b>	<b>3</b>
<b>1 Scanner Set RTC360</b>	<b>3</b>
<b>Accessories for RTC360</b>	<b>4</b>
<b>2 Power Supply</b>	<b>4</b>
2.1 Internal Battery	4
2.2 Battery Charger	4
2.3 External power	4
<b>3 Data Storage and Data Transfer</b>	<b>4</b>
<b>4 Tripods</b>	<b>4</b>
<b>5 Tribachs</b>	<b>4</b>
<b>6 Adapter</b>	<b>4</b>
<b>7 Targets</b>	<b>5</b>
7.1 Targets	5
7.2 Target Accessories	5
7.3 Target Pole	5
7.4 Magnetic Mount for Targets	5
7.5 Reflector Carriers	5
<b>8 Transport Options</b>	<b>5</b>
<b>9 Software</b>	<b>6</b>
<b>Suggested Equipment Setups</b>	<b>7</b>
<b>10 Configuration for remote control using a tablet(on lightweight tripod)</b>	<b>7</b>
<b>11 Configuration for remote control using a tablet (on heavy duty tripod and tribrach)8</b>	
<b>Customer Care Packages</b>	<b>9</b>
<b>12 Customer Care Packages (CCP)</b>	<b>9</b>
<b>Trademarks &amp; Technical Data</b>	<b>10</b>
<b>13 Trademarks</b>	<b>10</b>
<b>14 Technical Data</b>	<b>10</b>

# Leica RTC360

## 1 Scanner Set RTC360

---



---

6012673

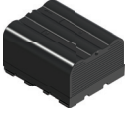
LRTC360 Scanner Package, consisting of:

- 1x RTC360 Laser Scanner (838 300)
  - 1x RTC360 Transport Container (817 063)
  - 4x GEB361 Lithium-Ion Battery (799 191)
  - 1x GKL341 Multicharger Prof 5000 (799 187)
  - 2x RTC360 USB Flash Drive - 256 GB (842 065)
  - 1x RTC360 Rain Cover (636 767)
  - 1x RTC360 Quick Guide
  - 1x RTC360 System USB Card
  - 1 year RTC360 CCP Basic contract (6013561)
-

# Accessories for RTC360

## 2 Power Supply

### 2.1 Internal Battery



---

799 191	<b>GEB361</b>	Lithium-Ion battery, 11.1V, 5.6Ah, rechargeable.
---------	---------------	--

---

### 2.2 Battery Charger



---

799 185	<b>GKL311</b>	Single-bay charger Prof 3000. Charger for one Li-Ion battery including AC/DC adapter and car adapter cable.
799 187	<b>GKL341</b>	Multi-bay charger Prof 5000. Charges up to 4 batteries, including power cable.
734 389	<b>GDC221</b>	Car adapter for the GKL341 charger. Allows the use of the GKL341 with a cigarette lighter; 12V/24V DC/DC converter.

---

### 2.3 External power



---

864 640	<b>GEV282</b>	AC power supply. For indoor use only.
---------	---------------	---------------------------------------

---

## 3 Data Storage and Data Transfer



---

842 065	<b>MS256</b>	RTC360 USB Flash Drive - 256 GB.
---------	--------------	----------------------------------

---

## 4 Tripods



---

842 066	<b>GST80</b>	Lightweight Tripod for RTC360 Laser Scanner.
667 301	<b>GST120-9</b>	Heavy duty tripod, self-closing, with side clamp screws and carrying strap.
332 200	<b>GST4</b>	Tripod-star, for setting up tripods on hard and slippery surfaces.

---

## 5 Tribrachs



---

777 970	<b>GDF323</b>	Tribrach, without optical plummet, black.
---------	---------------	---

---

## 6 Adapter



---

842 067	<b>GAD120</b>	Tribrach Adapter for RTC360 Laser Scanner.
842 068	<b>GAD121</b>	Adapter plate for flexible mounting of the RTC360.
870 985	<b>GAD122</b>	Adapter to mount a RTC360 on top of a Leica tripod.

---

## 7 Targets

### 7.1 Targets



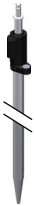
822 694	<b>GZT21</b>	4.5" circular black/white tilt & turn target for ScanStation. Leica standard stub fitting to mount on e.g. GLS12 pole. Centre height at Leica standard reflector height.
6009743		Target package, consisting of: <ul style="list-style-type: none"><li>• 4x GZT21 Scanning target (822 694)</li><li>• 4x GAD50 Stub-to-Screw adapter (823 044)</li><li>• 4x Flat magnet mount (670 229)</li><li>• 1x GVP703 Soft bag (790 314)</li></ul>

### 7.2 Target Accessories



670 223		Target tripod.
670 224		Target tripod bag.
790 314	<b>GVP703</b>	Soft bag, for 4.5" circular black/white tilt & turn targets.
667 319		Dual Strut Support. With 2 telescopic legs, for rapid set-up. Suitable for poles of all diameters.

### 7.3 Target Pole



385 500		Reflector pole with stub. Quick release clamp for easy and rapid height adjustment. Graduated in cm and ft, minimum length 1.24 m (4.07 ft), extendible to 2.15 m (7.05 ft), weight 940 g (2.07 lb).
---------	--	--

### 7.4 Magnetic Mount for Targets

670 228		V-block magnetic mount for targets with 5/8" x 11 threaded post, for mounting on steel pipes.
670 229		Flat magnetic mount for targets with 5/8" x 11 threaded post, for mounting on flat steel surfaces.
823 044	<b>GAD50</b>	Adapter for mounting reflectors and target plates with stub fitting on 5/8" carriers.

### 7.5 Reflector Carriers



667 313	<b>GRT144</b>	Carrier with stub, pale green.
---------	---------------	--------------------------------

## 8 Transport Options



865 471	<b>GVP736</b>	Backpack for RTC360 Laser Scanner.
817 063	<b>GVP730</b>	Transport Container for RTC360 Laser Scanner and Accessories.

## 9 Software

---



864 515	Cyclone REGISTER 360 Permanent.
864 516	Cyclone REGISTER 360 15 day Evaluation.
864 517	Cyclone REGISTER 360 EnterpriseElite. 1yr license, includes 1yr CCP. Allows 100% overdraft on seat. Requires signed EnterpriseElite contract.
864 518	Cyclone REGISTER 360 TimeLimited. Orderable in variable durations. Must be fully paid in advance.
5308150	Cyclone Subscription base (1yr). Base product for Cyclone module subscriptions. Must be ordered with at least one module Option.
5308159	Cyclone REGISTER 360 Option (1yr Subscription). Optional add-on for base Cyclone 1yr Subscription base (5308150); base must be included.
6012199	Cyclone REGISTER 360 CCP 1yr. Technical support by telephone/email. Software updates.
6012200	Cyclone REGISTER 360 CCP 2yr. Technical support by telephone/email. Software updates.
6012201	Cyclone REGISTER 360 CCP 3yr. Technical support by telephone/email. Software updates.
6013216	Cyclone REGISTER 360 CCP 5yr. Technical support by telephone/email. Software updates.
5004425	Cyclone REGISTER 360 CCP Reactivation. Must be ordered with CCP if customer's previous CCP expired 6 or more months ago. CCP starts on new PO date.



☞ There is no article number for the Cyclone FIELD 360 app. The app is free of charge, but an active Cyclone REGISTER 360 license is needed for activation. The Cyclone FIELD 360 app for iOS is available for download at Apple App Store and for Android on Google Play. Contact your Leica Geosystems sales representative for recommended technical specifications.

---

# Suggested Equipment Setups

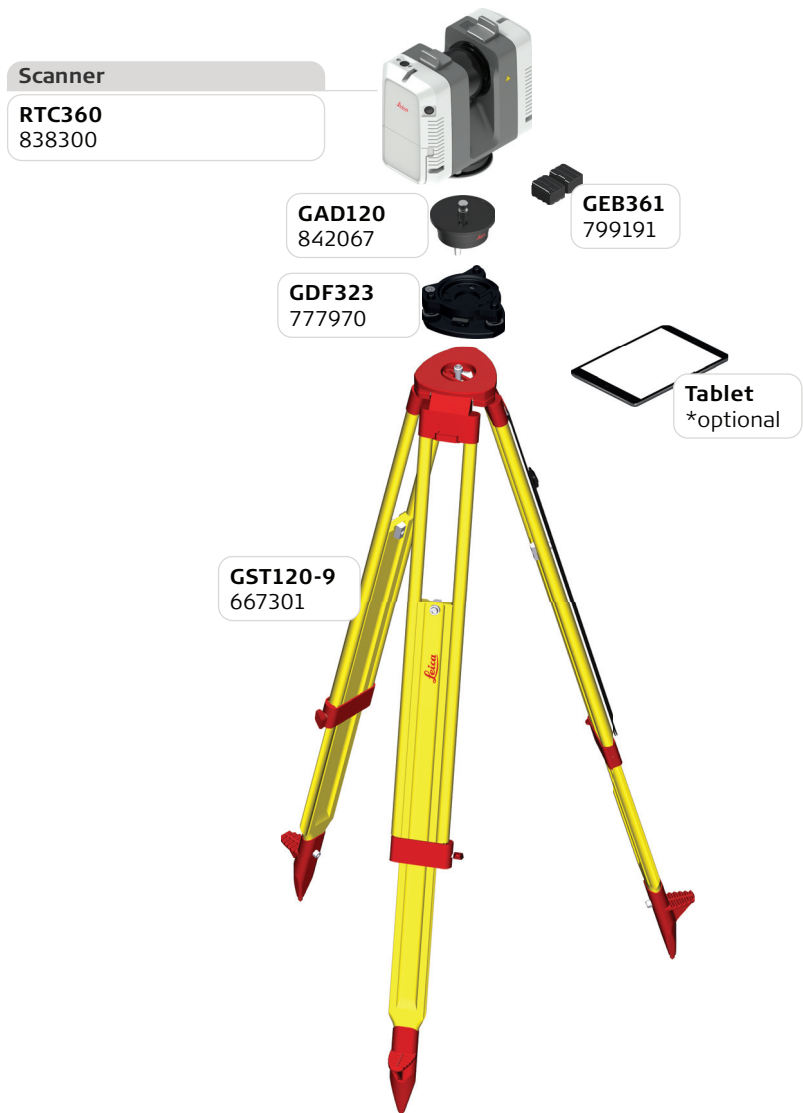
## 10 Configuration for remote control using a tablet (on lightweight tripod)

---



## 11 Configuration for remote control using a tablet (on heavy duty tripod and tribrach)

---





# Customer Care Packages

## 12 Customer Care Packages (CCP)

The RTC360 standard package (6012673) includes a 1 year CCP Basic contract. Multi-Year CCP contracts are available, but can only be ordered with the initial purchase of an instrument.

### BASIC CCP»»

6013561	1 year CCP Basic.
6013562	2 years CCP Basic.
6013563	3 years CCP Basic.
6013564	5 years CCP Basic.

### BLUE CCP»»

6013565	1 year CCP Blue.
6013566	2 years CCP Blue.
6013567	3 years CCP Blue.
6013568	5 years CCP Blue.

### BRONZE CCP»»

6013572	1 year Ext. CCP Bronze.
6013569	2 years CCP Bronze.
6013570	3 years CCP Bronze.
6013571	5 years CCP Bronze.

### SILVER CCP»»

6013573	1st year CCP Silver.
6013577	1 year Ext. CCP Silver.
6013574	2 years CCP Silver.
6013575	3 years CCP Silver.
6013576	5 years CCP Silver.

### GOLD CCP»»

6013578	1st year CCP Gold.
6013582	1 year Ext. CCP Gold.
6013579	2 years CCP Gold.
6013580	3 years CCP Gold.
6013581	5 years CCP Gold.

	Customer Support	Extended Warranty	Hardware Maintenance incl. Calibration	Loaner Instrument
<b>Basic</b>	✓			
<b>Blue</b>	✓		✓	
<b>Bronze</b>	✓	✓		
<b>Silver</b>	✓	✓	✓	
<b>Gold</b>	✓	✓	✓	✓

# Trademarks & Technical Data

## 13 Trademarks

---

The *Bluetooth*® word mark and logos are owned by Bluetooth SIG, Inc. and any use of such marks by Leica Geosystems AG is under license.

SD and microSD are trademarks of the SD-3C, LLC.

Other trademarks and trade names are those of their respective owners.

---

## 14 Technical Data

---

**Scanner:**

Laser class 1 in accordance with IEC 60825-1 resp. EN 60825-1





Revolutionising the world of measurement and survey for nearly 200 years, Leica Geosystems is the industry leader in measurement and information technologies. We create complete solutions for professionals across the planet. Known for innovative product and solution development, professionals in a diverse mix of industries, such as surveying and engineering, building and heavy construction, safety and security, and power and plant trust Leica Geosystems for all their geospatial needs. With precise and accurate instruments, sophisticated software, and trusted services, Leica Geosystems delivers value every day to those shaping the future of our world.

Leica Geosystems is part of Hexagon (Nasdaq Stockholm: HEXA B; hexagon.com), a leading global provider of information technology solutions that drive productivity and quality across geospatial and industrial landscapes.

Illustrations, descriptions and technical specifications are not binding and may change.  
Printed in Switzerland - Copyright Leica Geosystems AG, Heerbrugg, Switzerland, 2018.  
870514-1.2.0en - V.19